



Gmail

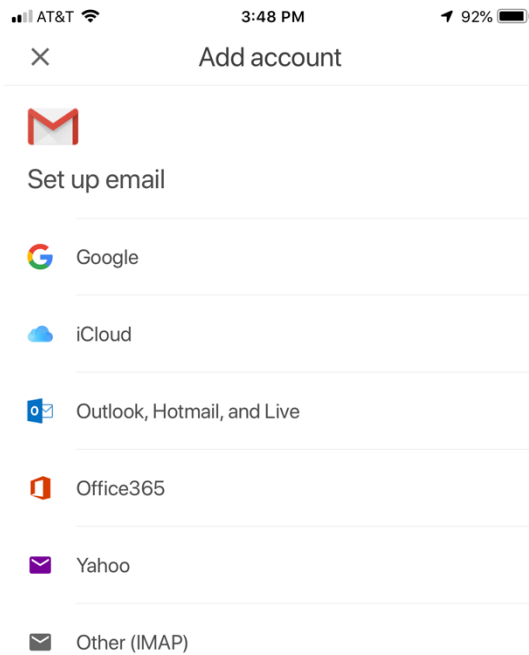
***How to configure your Villanova GMAIL on a Mobile Device?***

Install the GMAIL App from the Apple App Store or GooglePlay Store.

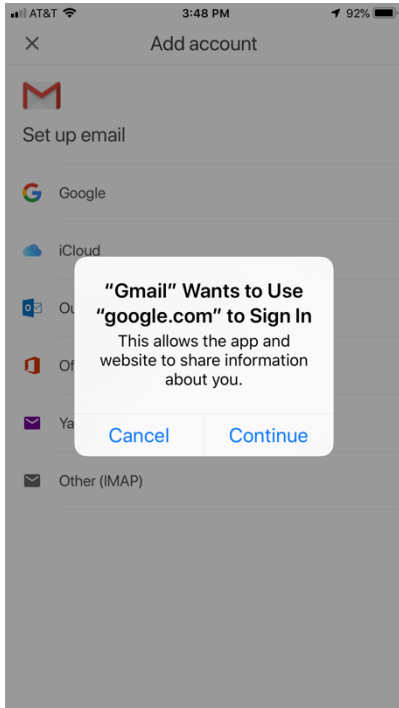
Open the Application your mobile device.

Touch Sign In

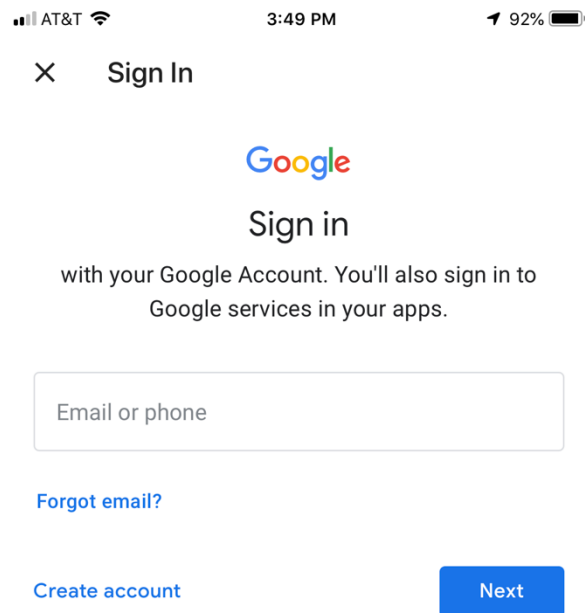
SIGN IN



Touch Google



Touch Continue



Sign in using your Villanova email account [user1@villanova.edu](mailto:user1@villanova.edu)

You will be signed into your Villanova GMAIL account.

